

Panasonic
ideas for life



PV Series Setup Software
IMAGECHECKER®

PVWIN

PVWIN

PV Series Setup Software

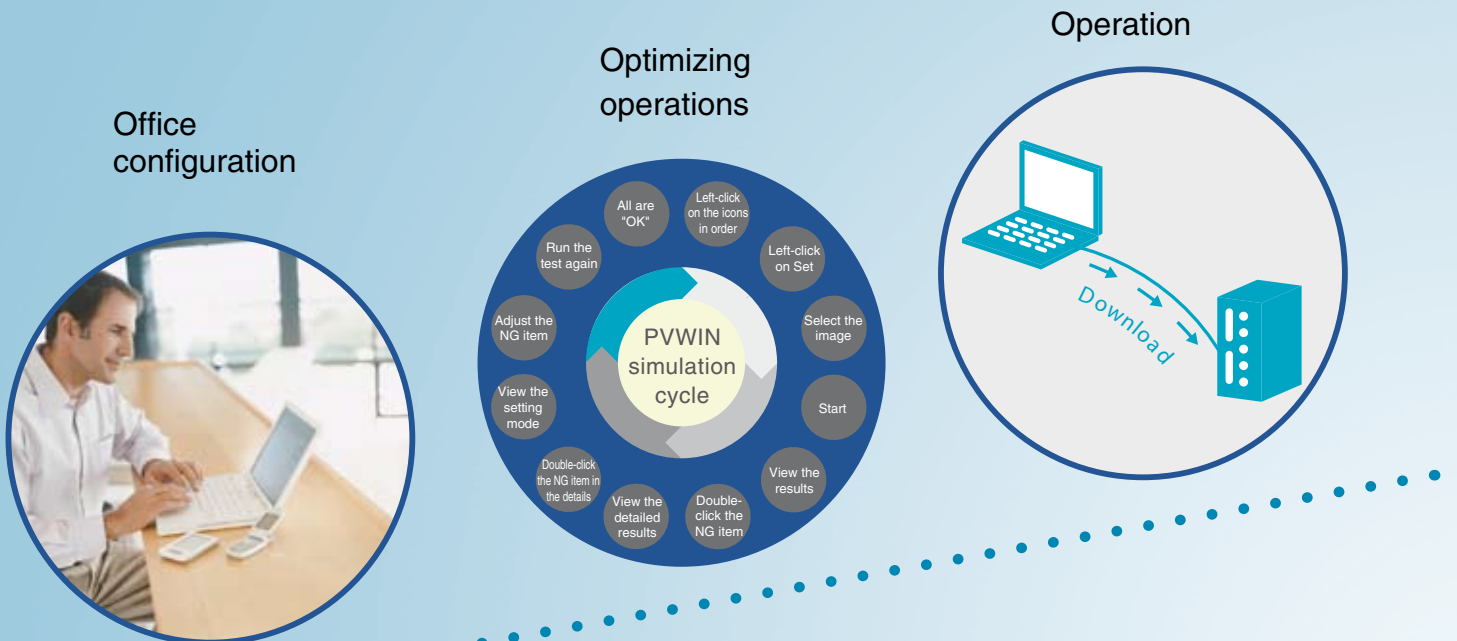
Industrial Machine Vision



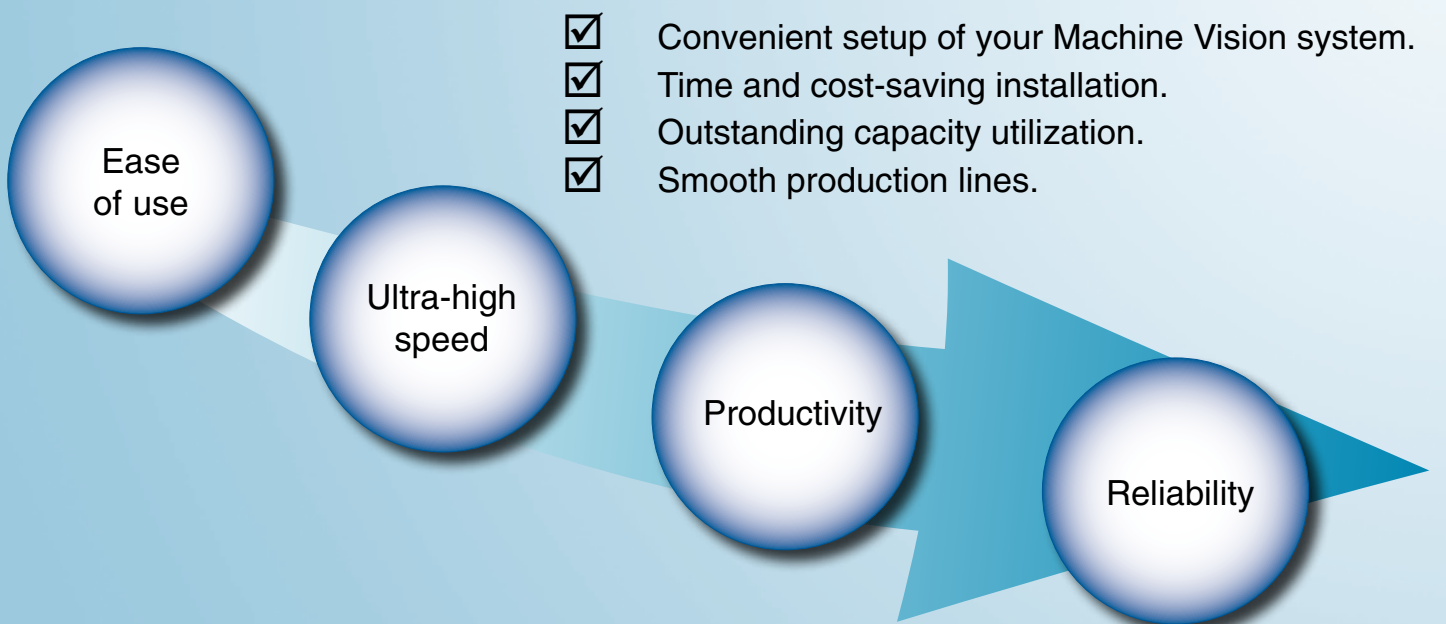
PV series setup software PVWIN

Combining software efficiency with hardware reliability

PVWIN complements the PV series' reliability with superior user-friendliness, allowing you to configure your inspection systems completely and easily while avoiding downtime.



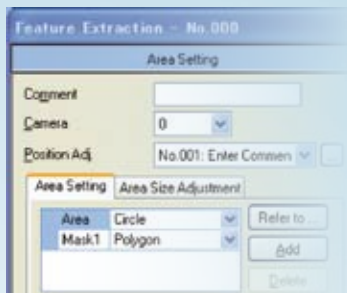
Handle the process line with **PVWIN**



Simulation function

Efficient workflow and easy to operate

This function allows you to simulate your complete inspection task by verifying multiple images (from different cameras) simultaneously. Since inspection results are listed in detail in a separate window, making adjustments is convenient.



Checker setup



All saved images get evaluated automatically

PVWIN simulation cycle

1

2

3

4

Settings accepted at the push of a button



OK/NG - results are listed in detail

Block	Checker	Jud...	Comment
0	Connector (Gra. Edg.) No.000	OK	Upside Pitch
0	Connector (Gra. Edg.) No.001	OK	Underside Pitch
0	Connector (Gra. Edg.) No.002	OK	Left side Pitch
0	Connector (Gra. Edg.) No.003	OK	Right side Pitch
0	Judgement (External output) No.000	OK	

even without controller

Create and optimize PV500 inspection programs without having a PV500 controller at hand!



Screen layout

Practical user interface enhances operation efficiency

The user interface was designed by experienced visual inspection industry. The result is an elegant, down-to-earth software

Navigation view

Displays the inspection step icons.

Setting tree

Displays the setting items in a tree form.

Image map

Displays the thumbnail of the image in the camera window.

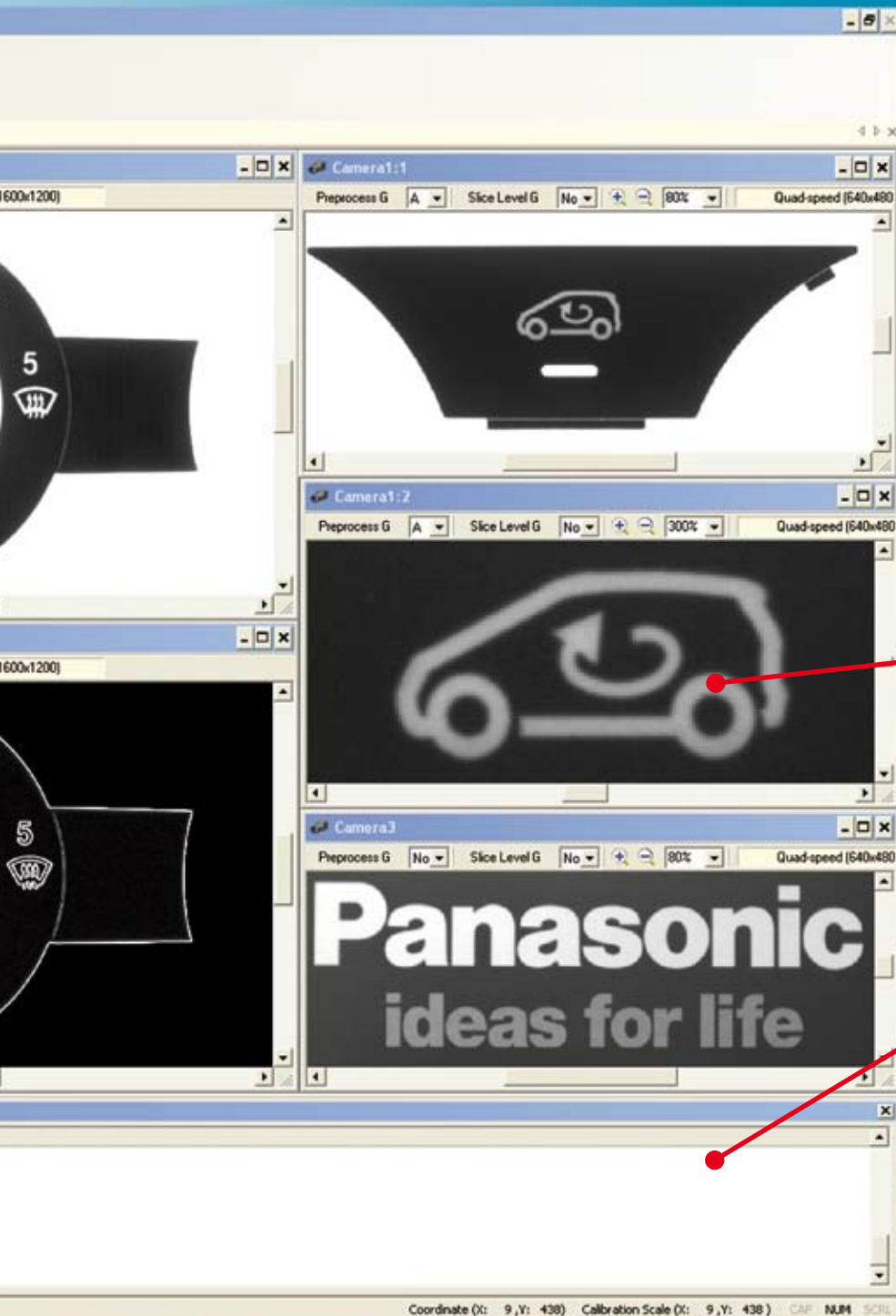
The screenshot shows the PVWIN software interface. At the top is a menu bar with options: File, Environment, Type, Inspection, Simulation, Tool, View, Window, Help. Below the menu bar is a toolbar with various icons. The main interface is divided into several panels:

- Navigation View:** Located on the left, it displays a series of icons representing different inspection steps.
- Select Checker Dialog:** A central dialog box with a list of checker types and numbers. The 'Checker Type' is set to 'Line'. The list includes: Binary Window, Gray Window, Binary Edge, Gray Edge, Feature Extraction, Smart Matching, Flaw Detection, Connector (Bin. Win.), Connector (Gra. Win.), and Connector (Gra. Edg.).
- Camera Windows:** Two windows labeled 'Camera0:1' and 'Camera0:2' showing a circular object with numbered points (0, 1, 2, 3, 4) for inspection. The 'Camera0:1' window shows a white object on a black background, while 'Camera0:2' shows a black object on a white background.
- Simulation Result Table:** Located at the bottom right, it displays a table with columns: No., Total Judgement, Inspection Time, and Execution Block.

No.	Total Judgement	Inspection Time	Execution Block
22	-----	14:52:22	Execute All
23	-----	14:52:23	Execute All
24	-----	14:52:23	Execute All
25	-----	14:52:23	Execute All
26	-----	14:52:23	Execute All
27	-----	14:52:23	Execute All
28	-----	14:52:23	Execute All
29	-----	14:52:24	Execute All



vision system engineers and in close operation with screen layout that maximizes operation efficiently.



Camera window
Displays the camera image.

Result window
Displays the simulation and test results.

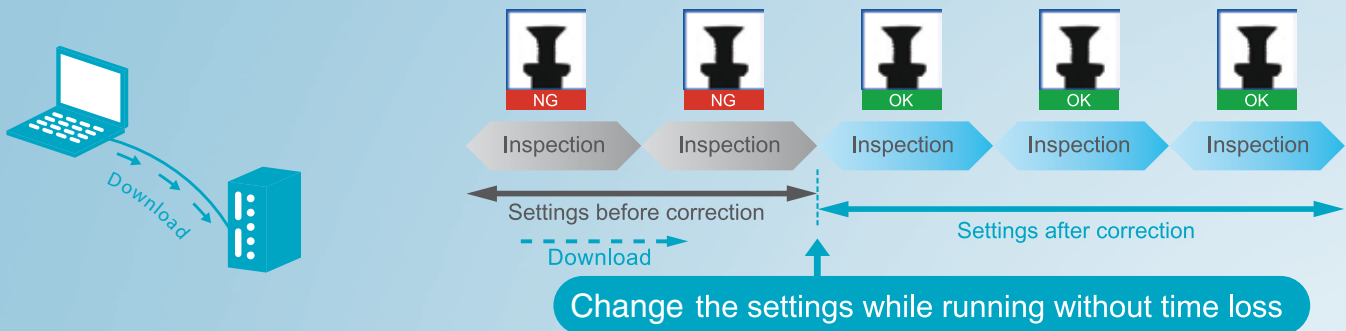


PV series setup software PVWIN

Useful functions

Change settings without stopping production

PVWIN can download data without stopping production lines. This ability combined with PVWIN's simulation function maximizes capacity utilization and reduces production loss.



Easy setting functions

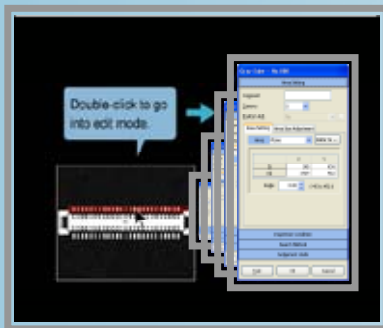
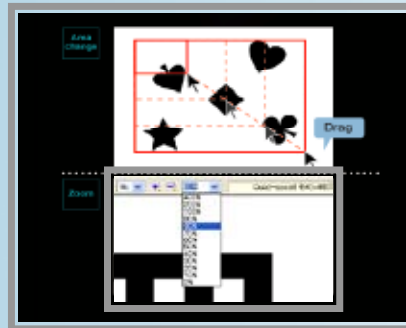
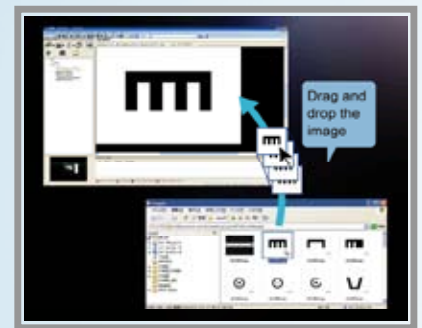


Image loading/viewing



Change/zoom



Mode change/edit mode

Data logging function

Inspection results can be output in text format, allowing you to manage project history. In combination with the simulation function, this function allows you to achieve optimum thresholds (judgement criteria), making the setting work more accurate and efficient.

Export function

The set data (details) can be output in CSV format. Template images of the smart matching checker can be saved as bitmap files.

Choose between keypad or keyboard to set up your system

PVWIN supports direct input and copy-and-paste, which can significantly reduce time required for configuration. Thus complex parameterizations can easily be handled via keyboard - whereas minor modifications can still be done by keypad.

Specifications

PVWIN	
Software to set up PV series IMAGECHECKER	
PVWIN operation requirements	
Computer	IBM PC/AT compatible
OS	Microsoft Windows Vista®, Windows®XP, Windows®2000
Required hard disk capacity	70MB minimum (excl. capacity for storing set data and image data)
CPU	Pentium III 700 MHz or better
Memory installed	512MB minimum
Image resolution	1024 x 768 minimum
Display color	High color (16bits) minimum
Communication interface	USB 2.0, TCP/IP Ethernet (1Gbps compatible) (Soon to be supported)

Image Receiver for PV	
Software to receive output images from PV series IMAGECHECKER units via Ethernet	
Image Receiver for PV operation requirements	
Computer	IBM PC/AT compatible
OS	Microsoft Windows Vista®, Windows®XP, Windows®2000
Required hard disk capacity	50MB minimum (excl. capacity for storing image data)
CPU	Pentium III 700MHz or better
Memory installed	256MB minimum
Image resolution	1024 x 768 minimum
Display color	High color (16bits) minimum
Communication interface	TCP/IP Ethernet (1Gbps compatible)

supported
languages

English, German, Italian, Spanish, French, Japanese, Chinese (simplified) and Korean.

for free

The above software can be downloaded from our website: <http://panasonic-denko.co.jp/ac/e/>

North America

Europe

Asia Pacific

China

Japan

Panasonic Electric Works

Please contact our Global Sales Companies in:

Europe

▶ Headquarters	Panasonic Electric Works Europe AG	Rudolf-Diesel-Ring 2, 83607 Holzkirchen, Tel. +49 (0) 8024 648-0, Fax +49 (0) 8024 648-111, www.panasonic-electric-works.com
▶ Austria	Panasonic Electric Works Austria GmbH	Josef Madersperger Str. 2, 2362 Biedermannsdorf, Tel. +43 (0) 2236-26846, Fax +43 (0) 2236-46133 www.panasonic-electric-works.at
	PEW Electronic Materials Europe GmbH	Ennshafenstraße 30, 4470 Enns, Tel. +43 (0) 7223 883, Fax +43 (0) 7223 88333, www.panasonic-electronic-materials.com
▶ Benelux	Panasonic Electric Works Sales Western Europe B.V.	De Rijn 4, (Postbus 211), 5684 PJ Best, (5680 AE Best), Netherlands, Tel. +31 (0) 499 372727, Fax +31 (0) 499 372185, www.panasonic-electric-works.nl
▶ Czech Republic	Panasonic Electric Works Czech s.r.o.	Průmyslová 1, 34815 Planá, Tel. (+420-)374 799 990, Fax (+420-)374 799 999, www.panasonic-electric-works.cz
▶ France	Panasonic Electric Works Sales Western Europe B.V.	Succursale française, 10, rue des petits ruisseaux, 91370 Verrières Le Buisson, Tél. +33 (0) 1 6013 5757, Fax +33 (0) 1 6013 5758, www.panasonic-electric-works.fr
▶ Germany	Panasonic Electric Works Europe AG	Rudolf-Diesel-Ring 2, 83607 Holzkirchen, Tel. +49 (0) 8024 648-0, Fax +49 (0) 8024 648-111, www.panasonic-electric-works.de
▶ Hungary	Panasonic Electric Works Europe AG	Erdőalja út 91/a, 1037 Budapest, Tel. +36 (0) 20 9715688, www.panasonic-electric-works.hu
▶ Ireland	Panasonic Electric Works UK Ltd.	Irish Branch Office, Dublin, Tel. +353 (0) 14600969, Fax +353 (0) 14601131, www.panasonic-electric-works.co.uk
▶ Italy	Panasonic Electric Works Italia srl	Via del Commercio 3-5 (Z.I. Ferlina), 37012 Bussolengo (VR), Tel. +39 (0) 456752711, Fax +39 (0) 456700444, www.panasonic-electric-works.it
▶ Nordic Countries	Panasonic Electric Works Nordic AB	Sjöängsvägen 10, 19272 Sollentuna, Sweden, Tel. +46 859476680, Fax +46 859476690, www.panasonic-electric-works.se
▶ Poland	Panasonic Electric Works Polska sp. z o.o	Jungmansgatan 12, 21119 Malmö, Tel. +46 40 697 7000, Fax +46 40 697 7099, www.panasonic-fire-security.com
▶ Portugal	Panasonic Electric Works España S.A.	ul. Wołoska 9A, 02-583 Warszawa, Tel. +48 (0) 22 338-11-33, Fax +48 (0) 22 338-12-00, www.panasonic-electric-works.pl
▶ Spain	Panasonic Electric Works España S.A.	Portuguese Branch Office, Avda Adelino Amaro da Costa 728 R/C J, 2750-277 Cascais, Tel. +351 214812520, Fax +351 214812529
▶ Switzerland	Panasonic Electric Works Schweiz AG	Barajas Park, San Severo 20, 28042 Madrid, Tel. +34 913293875, Fax +34 913292976, www.panasonic-electric-works.es
▶ United Kingdom	Panasonic Electric Works UK Ltd.	Grundstrasse 8, 6343 Rotkreuz, Tel. +41 (0) 41 7997050, Fax +41 (0) 41 7997055, www.panasonic-electric-works.ch
		Sunrise Parkway, Linford Wood, Milton Keynes, MK14 6LF, Tel. +44 (0) 1908 231555, Fax +44 (0) 1908 231599, www.panasonic-electric-works.co.uk

North & South America

▶ USA	PEW Corporation of America	629 Central Avenue, New Providence, N.J. 07974, Tel. 1-908-464-3550, Fax 1-908-464-8513, www.pewa.panasonic.com
--------------	-----------------------------------	---

Asia Pacific/China/Japan

▶ China	Panasonic Electric Works (China) Co., Ltd.	Level 2, Tower W3, The Towers Oriental Plaza, No. 2, East Chang An Ave., Dong Cheng District, Beijing 100738, Tel. (010) 5925-5988, Fax (010) 5925-5973
▶ Hong Kong	Panasonic Electric Works (Hong Kong) Co., Ltd.	RM1205-9, 12/F, Tower 2, The Gateway, 25 Canton Road, Tsimshatsui, Kowloon, Hong Kong, Tel. (0852) 2956-3118, Fax (0852) 2956-0398
▶ Japan	Panasonic Electric Works Co., Ltd.	1048 Kadoma, Kadoma-shi, Osaka 571-8686, Japan, Tel. (06) 6908-1050, Fax (06) 6908-5781, http://panasonic-electric-works.net
▶ Singapore	Panasonic Electric Works Asia Pacific Pte. Ltd.	101 Thomson Road, #25-03/05, United Square, Singapore 307591, Tel. (06255) 5473, Fax (06253) 5689